

disy Preludio

Creating, searching, managing and exchanging metadata

Intuitive metadata management

disy Preludio allows you to quickly and easily create, find and manage metadata according to European and international standards – the ideal basis for documenting all your spatial data. With disy Preludio you can publish your metadata on the Internet and exchange it with other organisations via standard interfaces. A built-in map viewer will provide you with a WMS preview of your spatial data.

Be INSPIREd

The market for spatial data is ready for information and data exchange on the Internet. New technical possibilities assist you in getting well positioned in this market and in complying with European and national regulations.

Metadata, as a set of structured descriptions of data, provide the means to document all your spatial data. Similar to a library, metadata arrange your data in a catalogue so that other users can easily find and use your spatial data.

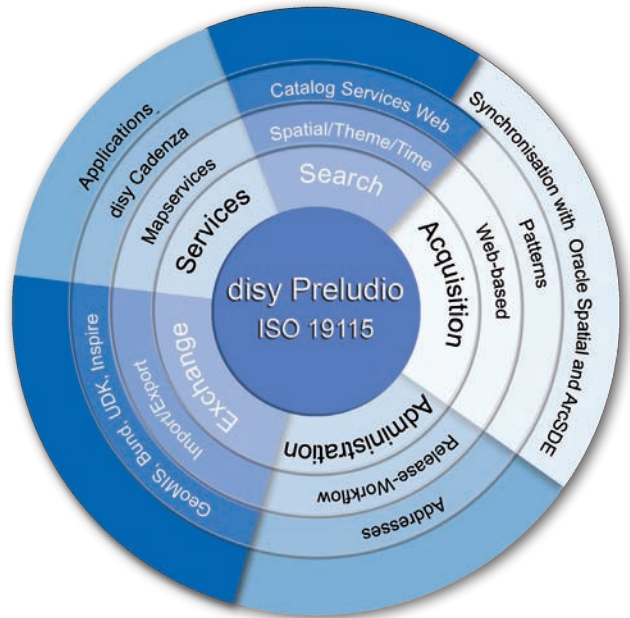
The European INSPIRE directive (Infrastructure for Spatial Information in Europe) requires organisations that store spatial data to document and publish them through metadata. This applies to EU countries as well as to federal states, regions, districts and communities.

disy Preludio assists you in documenting your spatial data. At the same time you fulfil your reporting obligations. Benefit from this unique tool that supports current standards and is well adapted to your specific needs.

Neat and tidy: Enjoy a clearly structured environment for your spatial data

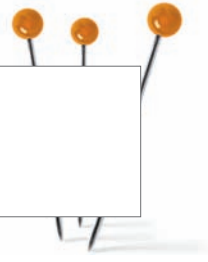
You will always have an overview of your spatial data once you have documented it in accordance with the standard. Systematic data documentation will help you save both time and money. Finding spatial data or creating new metadata suddenly becomes child's play.

disy Preludio has been implemented as a web-based application in order to provide all employees with access to the central metadata repository. As a result, no local installation is required for both metadata creation and search.



Easily comply with the ISO 19115/ISO 19119 and INSPIRE standard

- **User-friendly:**
A tree structure for each metadata set, a menu similar to Windows, undo/redo functions and clearly structured entry forms simplify handling of large amounts of data.
- **Clearly structured:**
You have access to important information and functions at any time.
- **Precise:**
Each input value will be checked immediately. You can easily identify incomplete entries or wrong information.
- **Fast:**
Templates allow you to enter several similar sets of data.
- **Helpful:**
The context menu explains each metadata attribute.



Valuable, appealing, open, comprehensive

Valuable: Discover your spatial data

The user-friendly web user interface helps you to narrow down your search to the most important criteria. With the integrated full text search you will find any data record managed within your network environment.

Moreover, criteria and map search features allow you to further specify your search by entering spatial or time-related data, keywords, contact details and more.

Appealing: Show what you have

Spatial data becomes even more meaningful when it is displayed on a digital map. This applies to data in general, but even more to spatial data. disy Preludio therefore includes a map viewer based on OpenLayers.

If you provide your maps as Web Map Services via a server, you can present them with disy Preludio. You only have to include your WMS address and provide the metadata for your layer. A user, who has found a documented layer, can click the corresponding button to have the selected layer and other layers of interest displayed on the map viewer.

The map viewer allows you to zoom in and out of the map, move the map and measure distances on the map. It is also possible to start another search for additional spatial data within the selected area on the new map.

Open: Fulfil your tasks automatically

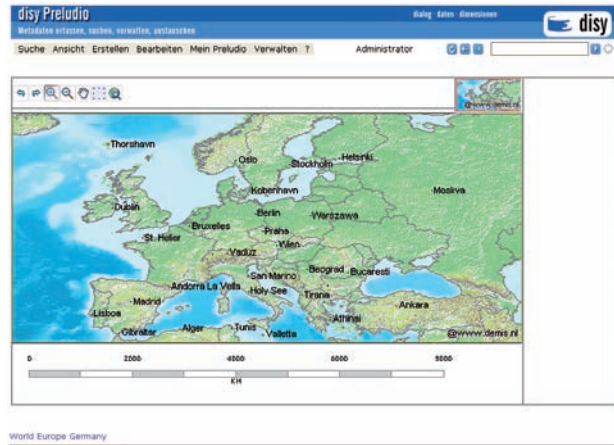
A systematic documentation of your spatial data helps you to quickly and flexibly exchange information with other organisations. This means that everyone benefits from standardisation: those who require your spatial data and your own company which – thanks to disy Preludio – has access to spatial data from other organisations.

disy Preludio supports all current standards such as ISO 19115, ISO 19119, ISO 19139. You can integrate your metadata into a comprehensive spatial data infrastructure via OGC CS-W interfaces. The map viewer also supports current standards including WMS. It can therefore access external map services in order to display spatial data from other organisations on the Internet.

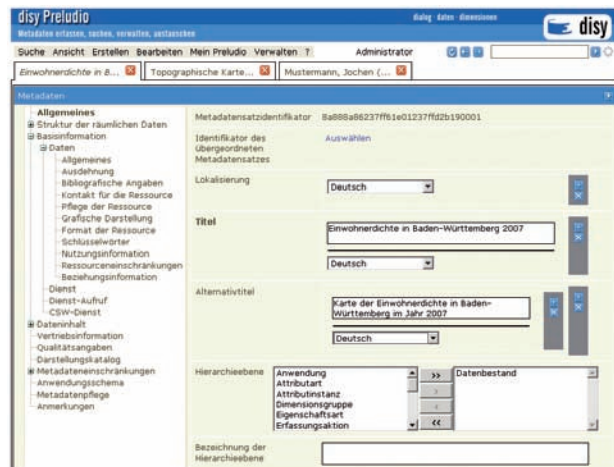
Comprehensive: Use spatial data from other organisations

disy Preludio can be used as a server so that you can provide metadata to other organisations. In addition, we will assist you in developing your own spatial data portal. Further metadata servers can be integrated (broker and harvesting functionality) via standardised CS-W interfaces.

The handling remains the same: the user can access all relevant spatial data from the same starting point on the intranet or Internet.



OpenLayers Map Viewer displaying OGC services integrated into disy Preludio



Clearly structured input mask for editing several metadata records including validation during data entry



Metadata management that suits your specific needs

Preludio Standard: Just go ahead!

The software provides all major functions required to process metadata for spatial data and services in accordance with international standards. The free standard edition contains the most important functions allowing you to start immediately and free of charge:

- Easy metadata search
- Intuitive metadata creation according to ISO 19115/19119 and INSPIRE
- Clear user management
- Visualisation of your spatial data on the map viewer via WMS
- OGC CS-W interface
- Data stored in a relational database (HSQL)
- Multilingual graphical user interface

Preludio Professional: Customised to fit your needs

If you require additional features or adaptations, you can always upgrade to Preludio Professional. It provides a complete framework for the development of larger infrastructures. We can configure Preludio Professional according to your individual project requirements:

- New GUI design
- Additional databases such as Oracle, PostgreSQL
- Distributed search and broker functionality
- Specific user profiles and LDAP integration
- User-specific filters
- Definition of additional import and export formats
- Direct link to your spatial data base
- Introduction of release levels
- Reading existing metadata

To assist you in implementing your spatial data infrastructure, we offer professional support and expert advice.

Your advantages at a glance:

- Web-based metadata creation
- Intuitive user interface
- Web-based search with different search criteria
- Integrated OpenLayers map viewer for WMS and other OGC Services
- Supports metadata standards: ISO 19115, ISO 19119, ISO 19139, INSPIRE
- Adaptable to different profiles: DE profile, AT profile, GM03, NOKIS, etc.
- OGC Catalogue Service Web interface (CS-W)
- Template management, import from and export to third-party systems
- List, brief, detailed and PDF view of metadata
- Metadata storage in different databases
- Supports development of spatial data infrastructures (SDI) according to INSPIRE

Request your free Preludio
Standard edition today.