

GeoSpatial Integration for Talend

Enrich. Calculate.

Edit. All in one.

Consistent processing of spatial and attribute data.

A variety of routines and components.

Easy handling.

Enrich

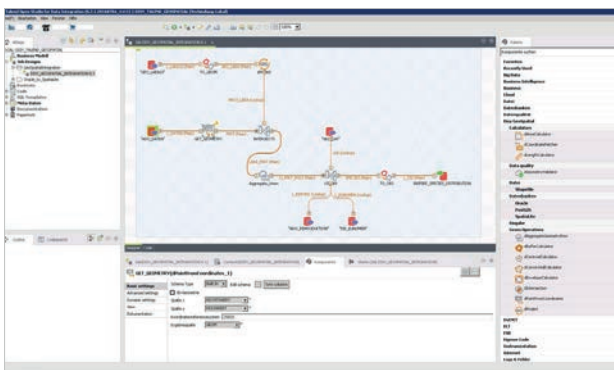
Talend is one of the world's leading providers of ETL software. **GeoSpatial Integration for Talend** by Disy allows for geometric enrichment of alphanumeric data. In addition, spatial data can be incorporated in data integration processes based on the Talend tools. Technology gaps within ETL processes can thus be avoided while ensuring consistent processing of all types of data.

Calculate

GeoSpatial Integration enhances the Talend software to understand **geometry data types** and provides **additional spatial functions** and **operators**. Users thus obtain additional data sources and operators that they can move to their workspace via drag & drop. Depending on the component currently used, they can select further settings or perform additional calculations.

Edit

All types of data can now be edited with a **single tool**, so that users no longer need to **switch between tools**. This not only saves costs for different software systems from multiple providers, but also significantly reduces the time required for getting familiar with each tool. A single user interface, a single approach and consistent, integrated processes – GeoSpatial Integration by Disy ensures consistency in the way you accomplish work.



GeoSpatial Integration by Disy turns Talend into a spatial ETL tool.

A single ETL tool for all data

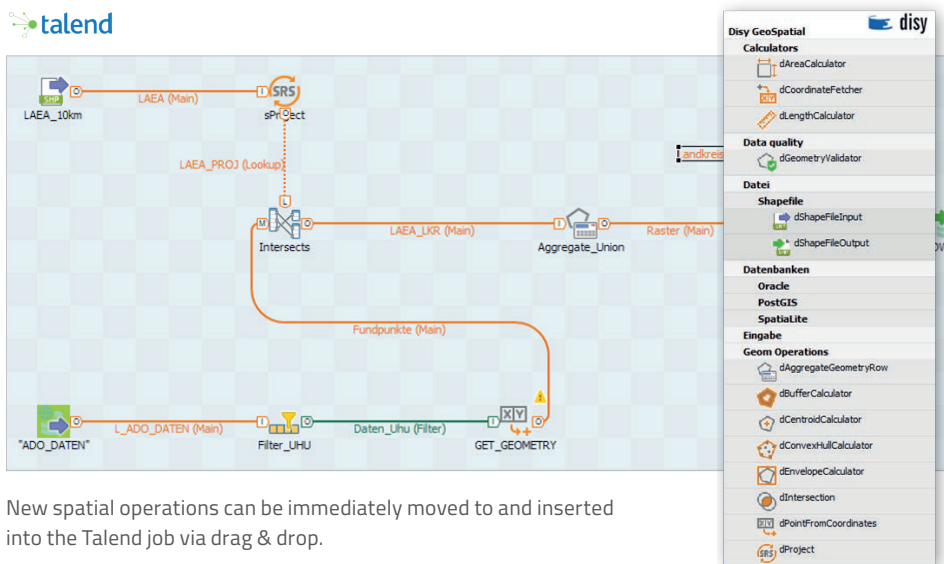
Thanks to GeoSpatial integration by Disy, **proven and field-tested ETL technologies** can now also be used for spatial data processing. In addition to the comprehensive set of data sources, operators and calculators, there are numerous functionalities that users can choose from, such as versioning and metadata management as well as working with distributed teams and release management. The tool also provides features for refactoring, central administration, load balancing and big data processing.



Features

Simple Drag & Drop

GeoSpatial Integration for Talend is implemented directly in the Talend environment. The Talend component palette is extended seamlessly with new components. You can add new data sources and geospatial operations to your existing Talend job.



New spatial operations can be immediately moved to and inserted into the Talend job via drag & drop.

Supported spatial databases

The current GeoSpatial Integration for Talend version supports the following spatial databases and formats:

- Oracle Locator and Spatial
- PostgreSQL with PostGIS
- SQLite with SpatiaLite
- Shapefiles
- WKT (Well-Known-Text)

More connectors for SAP HANA and ArcGIS-Server will follow soon.

A variety of possible spatial operations

- Create coordinate from a point/convert to point
- Create geometry based on WKT representation
- Convert WKT representation to geometry
- Calculate the length of a line
- Calculate the area of a polygon
- Calculate the centroid of a geometry
- Buffer a geometry
- Spatial queries (overlap, touch, etc.)
- Check whether a geometry is valid

Spatial operations are available as Talend routines and/or components.

Free demo version

GeoSpatial Integration is provided free of charge for Talend Open Studio.

Companies and government agencies interested in using the solution in live systems or together with Talend Data Integration or Talend Data Management Platform can opt for an annual subscription. This includes professional support and additional data quality and visualisation features, among others.

Your advantages at a glance

- Joint processing of all data within a single application
- Seamless integration into Talend's component palette
- Multiple routines and components
- Enhanced efficiency and reduced costs for ETL processes
- No more switching between ETL tools – avoiding technology gaps
- For common spatial databases, formats and Talend software edition

See for yourself how it works!

Request your trial now:

www.disy.net/geospatial-en

Disy Informationssysteme GmbH
Ludwig-Erhard-Allee 6 | 76131 Karlsruhe
Phone +49 721 16006-000 | Fax +49 721 16006-05
kontakt@disy.net | www.disy.net

